

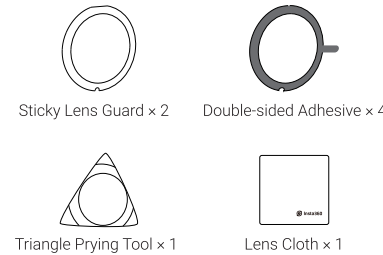
English

Instructions for Use

Insta360 X3

Sticky Lens Guards

1. What's Included

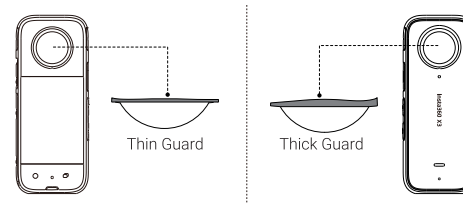


2. Installation

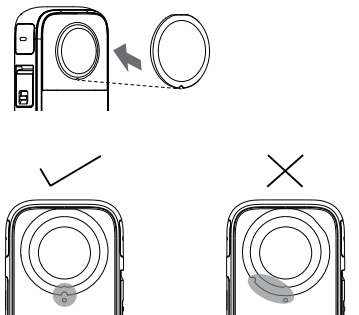
❶ For an assembly tutorial, please scan the QR code.



❷ It's important to distinguish the front and back for correct use of the Lens Guard. The thinner guard should be placed on the side with the camera screen, with the thicker guard placed on the opposite side.



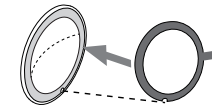
❸ Carefully apply the Lens Guard (with included double-sided adhesive) onto the X3 lens. Make sure the notch on the rim of the lens guard is correctly aligned with the rim of the lens. Hold for 15 seconds to ensure it is firmly attached. Failure to do this may result in negatives effects on shooting results or splash-proofing. Repeat this process for both sides.



Notes

- 1) Before use, make sure that the camera's lens is clean and dry. Always install the Lens Guard in a clean and dry environment. Check carefully for dust or other particles, as these may affect shooting results.
- 2) Prior to installing, ensure that the thin guard is installed on the side with the camera screen, with the thick guard used for the opposite side.
- 3) If you remove the Lens Guard from X3, apply a new double-sided adhesive before re-installing the Lens Guard.
- 4) The Sticky Lens Guard is only splash-proof and is not designed for underwater shooting. If you are planning to use the X3 underwater, remove the Sticky Lens Guard and use the X3 Dive Case.
- 5) To remove the Lens Guards, please use the included Triangle Prying Tool. Take care not to scratch the camera lenses as you remove the Lens Guards.
- 6) To change the double-sided adhesives, first remove the used double-sided adhesives and be sure that the inside of the Lens Guard is clean and has no residue. Repeat the installation process, ensuring the notch on the rim of the Lens Guard is correctly

aligned with the notch on the rim of the lens. Apply, then remove the protective sticker.



After-sales Service

The warranty period of the attached product is 3 months from the original retail purchase. Warranty service may vary according to the applicable laws of your state or jurisdiction. For detailed warranty policies, please visit <http://insta360.com/support>

* Disclaimer

Please read this Disclaimer carefully. Using this product means that you acknowledge and accept the terms of this disclaimer. By using this product, you hereby acknowledge and agree that you are solely responsible for your own conduct when using this product and any consequences thereof. You agree to use this product only for proper and lawful purposes. You understand and agree that Arashi Vision Inc. (hereinafter referred to as 'Insta360') accepts no liability for any and all misuse, consequences, damages, injuries, penalties, or any other legal responsibility directly or indirectly incurred by your using this product. Before every use, make sure that your product is functioning properly. If there's any damage or irregularity, stop using it immediately. Within the scope of state laws and regulations, Insta360 reserves the right of final explanation and revision for the commitment.

简体中文

Insta360 X3

使用说明

镜头保护镜

1. 物品清单



镜头保护镜 × 2



双面胶贴纸 × 4



三角形撬片 × 1



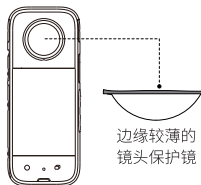
擦镜布 × 1

2. 安装

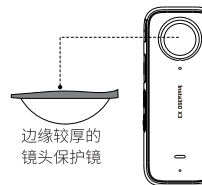
❶ 扫描二维码，查看粘贴视频教程。



❷ 区分前后镜头保护镜：较薄镜头保护镜需安装至相机屏幕侧，较厚镜头保护镜需安装至相机 Logo 侧。

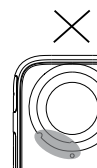
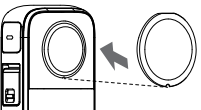


边缘较薄的
镜头保护镜



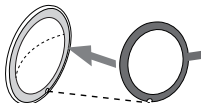
边缘较厚的
镜头保护镜

❸ 将贴有双面胶的镜头保护镜贴至镜头，注意圆孔位置的对应。粘贴后，用力按压 15 秒，保证镜头保护镜与贴附表面充分贴合。如粘贴不平整，会影响防水和画面拼接。



使用注意事项：

- 使用前，请先清洁镜头周边及其表面，保证吸附面清洁、干燥。确保仅在清洁、干燥的环境中安装镜头保护镜。如果有异物粘在镜头或镜头保护镜表面，会影响相机拍摄效果。
- 使用前，请先区分前后镜头保护镜：较薄镜头保护镜需安装至相机屏幕侧，较厚镜头保护镜需安装至相机 Logo 侧。
- 粘贴时，请勿取下重复粘贴以免影响粘性。
- 镜头保护镜仅防泼溅，如需水下拍摄，请使用专用的潜水壳或相关配件。使用潜水壳时，请先取下镜头保护镜。
- 拆卸镜头保护镜时，请使用随附的三角形撬片将其取下。拆卸时，注意不要划伤相机镜头。
- 更换双面胶贴纸时，请先清理旧双面胶贴纸，确保镜头保护镜内侧干净平整后，再将新的双面胶贴纸贴至镜头保护镜内侧的凹槽，注意圆孔位置的对应。



售后服务

自您最初零售购入之日起，本产品的保修期为 3 个月。详细的售后服务流程和保修条款，请访问 <http://insta360.com/support>

* 免责声明

请仔细阅读本声明，一旦使用本产品，即视为对本声明的全部认可和接受。
使用本产品，就意味着您认可并同意，您将对使用本产品的行为和可能产生的后果负全部责任。您承诺仅会出于正当合法的目的使用本产品。您理解并同意，对于直接或间接因使用本产品而造成的滥用、不利影响、损害、伤害、惩罚或者其他法律后果，影石创新科技股份有限公司（以下简称“Insta360”）将不承担任何责任。用户应遵循包括但不限于本文提及的使用注意事项。
每次使用前，请仔细检查配件，若出现破损、变形，请勿使用。
在国家法律法规范围内，本承诺解释权、修改权归 Insta360 所有。

Arashi Vision Inc.

Add: 11th Floor, Building 2, Jinlitong Financial Center,
Bao'an District, Shenzhen, Guangdong, China
Web: www.insta360.com
Tel: 400-833-4360 +1 800 6920 360
Email: service@insta360.com



Insta360 GmbH
Gartenfelder Straße 29-37, Gebäude 31/31.12 1.OG,
13599 Berlin, Germany
+49 177 856 7813
service@insta360.com